



**IMAGINE
ROTARY**

Rotary



Club of Tamworth First Light

MEETING 1625 ISSUE 20 WEDNESDAY 2nd Nov 2022



Rotary Year 2022 - 2023

District Governor	Neville Parsons
President:	Richard Hardwick
Secretary:	Vicki Cooper
Treasurer:	Dennis Maunder

Guess Hugh...?



Richard's Notes

The two most important days in your life are the day you are born and the day you find out why.

Mark Twain

Joke of the Week

I have been pondering the question, "is my wife dissatisfied with my body"

A tiny part of me says yes.

Good to see numbers back on the rise and welcome back Deb from your trip around Europe. We are heading into a busy period with the social calendar filling up with great activities from Marina and Dimity and the Rotary Golf Day being organised by the Golf Committee. Please support these activities as the funds raised supports Club activities and we can have a good time as well, win win.

Our guest speaker Ruth Cramer delivered a good insight into the stresses and financial difficulties that comes with a premature birth and the effects on all members of the family. More about this further down in the bulletin.

Announcements:

- **Reclaim the Night**

Reminder – I have sent an email to all members who indicated their availability for the event. It will be only a couple of hours for a very worthy cause.

- **Recyclable Collection**

Reminder to get collecting and to donate funds through the Return and Earn Machines. A great way to raise community funds and let all your family and friends know about the opportunity. Runs from 17 Oct 22 to 23 Apr 23.

- **Rotary Golf Day**

The Golf Committee has been busy and we have good numbers for the event. Please support if you have the time available.

- **First Light Art Gala**

November 19, 6pm at Tomm's Bar in the Heights. All proceeds from the night go towards our two environmental projects (Tree Maintenance and the Tamworth Community Garden). Submit your art works and come along for an enjoyable evening. Marina listed off the donations for prizes and raffles this week so there has been many generous suppliers for the event. Tickets available through the QR code further down in the bulletin.

Rotary News

First Light & Sunrise at StandTall



Hugh has sent in some photos of the IFMR Group. They had their AGM on the Margaret River WA (can we do that too??). 6 of them are now returning via the Nullarbor on their bikes. Hopefully we will see Hugh back in November! Safe travels Hugh



Guest Speaker Notes – Special Care Unit

Our guest speaker from the Special Care Unit of Hunter New England Local Health District was Ruth Cramer who is currently a Social Worker and was accompanied by Jenna Stewart a Special Care Nurse.

Special Care Nursery

The Special Care Nursery (SCN) at Tamworth Hospital provides services for newborn babies in the Northern Sector of Hunter New England Local Health District.

The SCN is an inpatient unit co-located with the maternity unit. The nursery is a six cot unit with capacity to increase in numbers to ten cots as needed.

Newborn babies are admitted to the SCN for a variety of reasons including prematurity requiring respiratory and/or feeding support, poor feeding, ongoing hypoglycaemia, jaundice requiring phototherapy, sepsis, very small and very large babies. Parents are encouraged to participate in the care of their baby.

Babies can be born and cared for at Tamworth Hospital from 34 weeks gestation, however, for pregnancies less than 34 weeks it is best practice for babies to be in a tertiary hospital, such as in Newcastle. This means that women who are at risk of having their baby at less than 34 weeks gestation will be transferred to a tertiary centre for birth. Once stable, babies are transferred back to Tamworth Hospital for ongoing care.

Visiting

Visiting for parents in the nursery is not restricted. However, other visiting is restricted to siblings and grandparents only. If any prospective visitors are unwell we ask that they do not visit until they are well.

Accommodation

Mothers boarding with their babies are accommodated in the maternity unit main ward.

Where beds may not be available accommodation may be arranged at Ronald McDonald House, which is within the grounds of Tamworth Hospital. Rotary Units are also available within the hospital grounds.

The SCN is a locked unit. Entry is gained by use of an intercom system at the nursery door.

Referral Eligibility Criteria

Tamworth Hospital is the major referral centre for the Northern Sector of Hunter New England Local Health District.

Referral Exclusion Criteria

Babies requiring ongoing respiratory support e.g. CPAP ventilations.

Babies less than 1100 gms. These babies are cared for at a Neonatal Intensive Care Unit, such as the Children's Hospital in Newcastle.

Ruth indicated the 27,000 premature babies are born each year, one in 35 suffering from cerebral palsy.

Ruth provided an insight into the myriad of issues accompanying the families of premature and sick babies with several heart breaking real life stories with a focus on the emotional and financial stresses burdened on these families with lack of sleep, the tyranny of distance to obtain services, dislocation of normal family life, guilt and feelings of neglect of other children, suicidal thoughts in both mothers and fathers, all of which underpinned the vital nature of this important service.

The Australian Early Development Index (AEDI) - www.aedi.org.au

What is the AEDI?

The AEDI is a relative population measure of how young children are developing in different Australian communities.

It reports on child outcomes across five developmental domains

Why is the AEDI important?

- National measure on child development prior to starting school
- Only data publicly available on early childhood populations
- Findings are used extensively across local communities: one of the few population level data sets available at suburb level

The broad value of the AEDI is:

1. Understanding effectiveness of investment at a state level – we need to do this over-time to develop a comprehensive picture



2. Capability building at the community level – enabling communities to bring a range of data together to prioritise and respond to local needs

How was it designed?

The AEDI is based on the Canadian Early Development Instrument (EDI) and has been adapted for use in Australia.

How is it funded?

The Australian Government has committed a total investment of \$51.2 million over five years, or \$28 million per three year collection cycle.

How is information collected?

Teachers complete a checklist – like a questionnaire – for children in their first year of full-time school.

The checklist is completed on a secure, web-based data entry system developed especially for the AEDI by the Australian Council for Educational Research.

AEDI Checklists are completed based on teachers' knowledge and observations of the children in their class.

Key Findings

National coverage was 261,203 children.

The majority of Australian children are doing well across the AEDI domains.

23.6% of Australian children are developmentally vulnerable on one or more AEDI domains.

Girls are more likely to be developmentally on track than boys.

Children who are proficient in English and speak another language at home are less likely to be developmentally vulnerable compared to all other children.

Children living in very remote areas of Australia are more likely to be developmentally vulnerable.

The majority of Australian indigenous children are on track across the domains, except for the language and cognitive skills domain.

Spread of Vulnerability

The findings clearly show disadvantage is not based on low socio-economic areas children from high socio-economic areas can still be vulnerable against one or more domains.

Early childhood development

The Australian Early Development Census (AEDC) measures the early childhood development of children in Australia in their first year of full-time school. It measures this across five domains that predict later health, education and social outcomes:

- physical health and wellbeing
- social competence
- emotional maturity
- language and cognitive skills (school-based)
- communication skills and general knowledge.

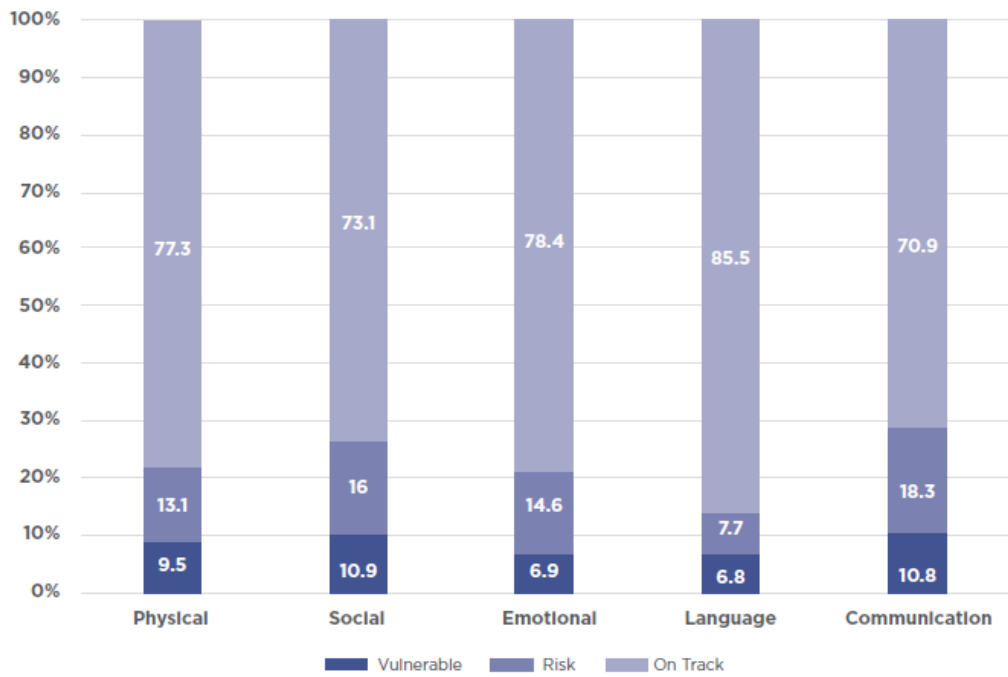
MORE INFORMATION

More information about the AEDC domains can be found in the [About the AEDC Domains](#) fact sheet.

The AEDC results can tell us if children are developmentally on track or if they need more support through their school years.

In the New England district, over 50% of children were developmentally on track for each of the five AEDC domains in 2018 (see Figures 2-15). The proportion of children developmentally vulnerable was greatest in Tenterfield and Moree Plains.

Figure 11. 2018 AEDC results for Tamworth Regional LGA



Source: AEDC Data Explorer: <https://www.aedc.gov.au/data/data-explorer> (accessed 26 September 2019)

Thanks to Glen McIntosh for the notes



Louise Matthews giving the Vote of Thanks

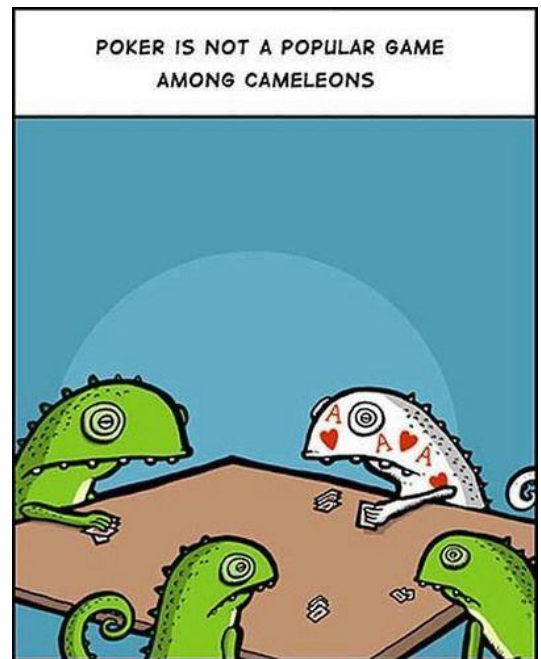
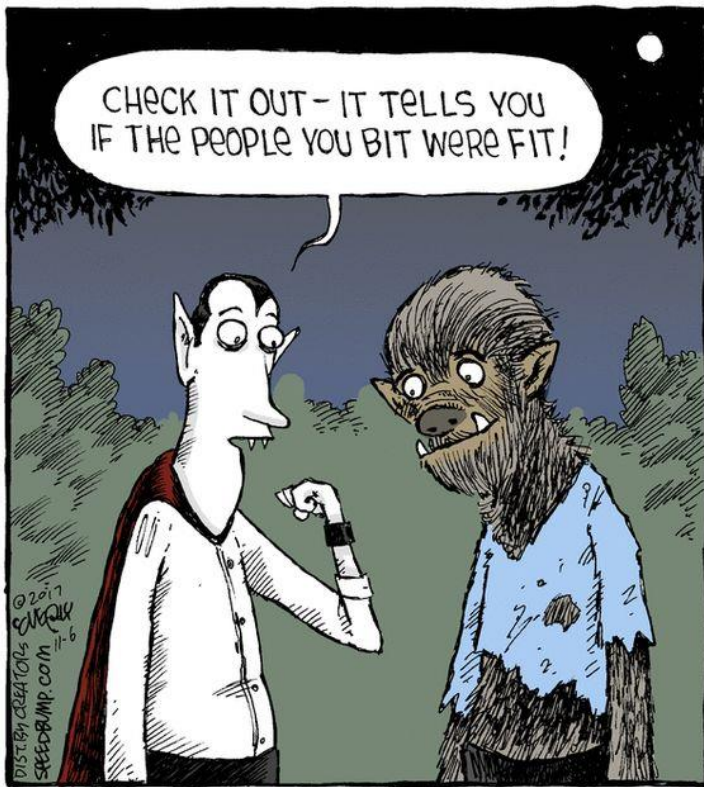
Funny Corner

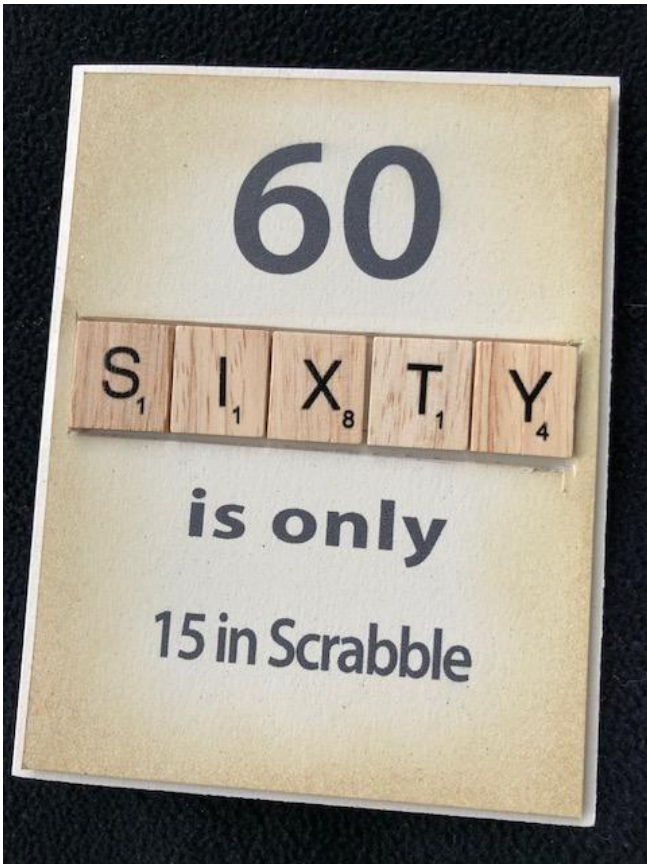
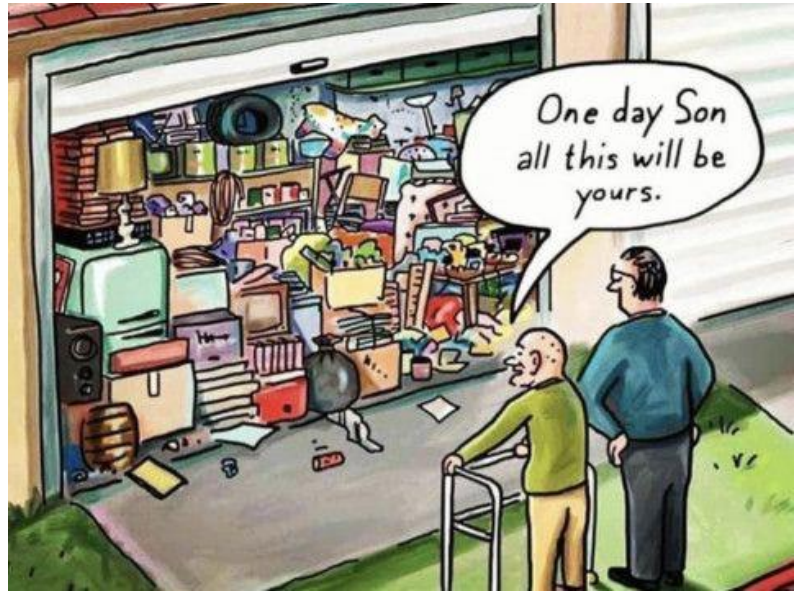
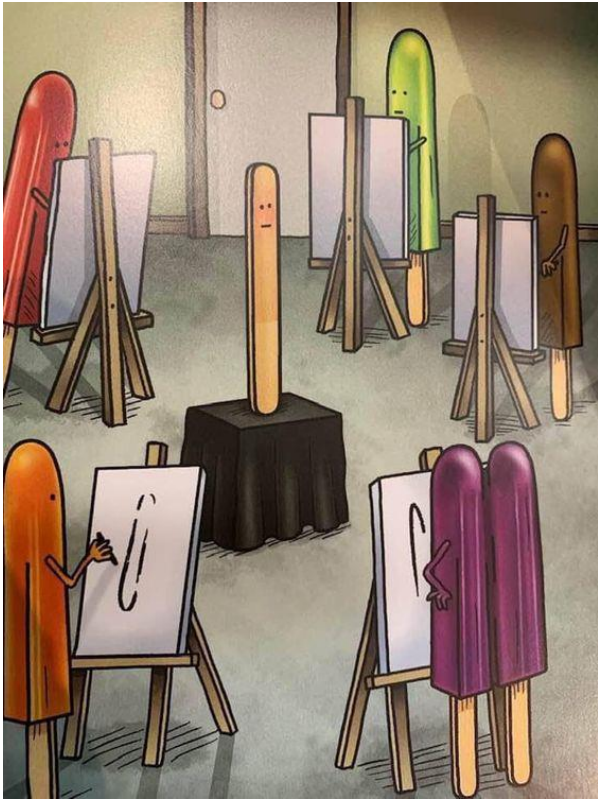
Thanks to Bruce H
for this funny. Could
be a new event for
our Golf Committee!!

Coming soon to a street near you!

Street golf

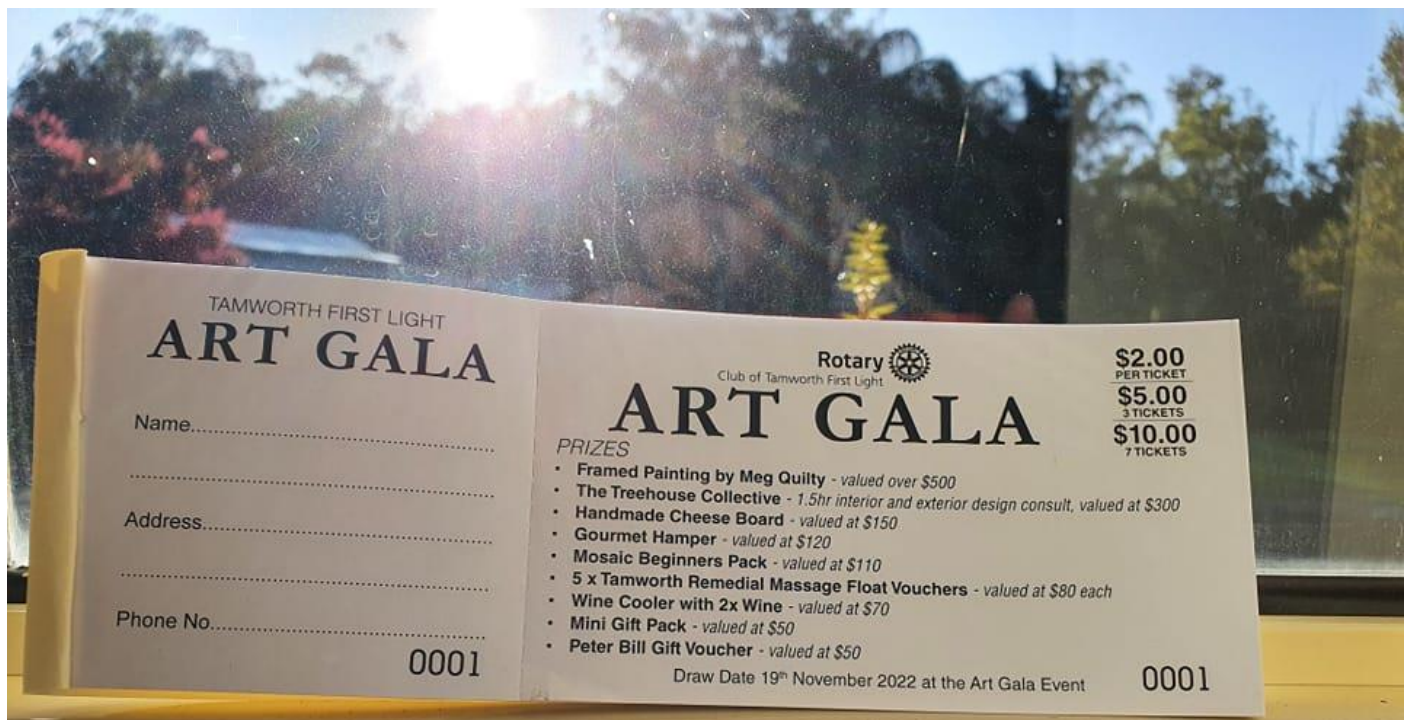






Notices:

Raffle tickets available to purchase – pick up a book of tickets from Marina (work @ Encircle Financial Services in White St). Full does not need to be sold, just as many as you can. Thanks so much!



THE ROTARY CLUB OF
TAMWORTH FIRST LIGHT PRESENTS

FIRST LIGHT ART GALA

An exhibition showcasing outstanding artworks
created by our members

NOVEMBER 19, 6 PM
TOMM'S BAR
THE HEIGHTS, TAMWORTH

\$65 per ticket (incl transaction fee)
Includes complimentary drink
with canapes throughout the evening
Lucky Door Prize, Raffles, Silent Auction



TICKETS AT [HTTPS://WWW.EVENTBRITE.COM.AU/E/431528271677](https://www.eventbrite.com.au/e/431528271677)

ALL FUNDS RAISED ASSIST
THE ROTARY CLUB OF TAMWORTH FIRST LIGHT
ENVIRONMENTAL PROJECTS

Buy tickets here:

<https://www.eventbrite.com.au/e/431528271677>



District Rotary Showcase – Register Now!

<https://registrations.dacdb.com/Register/index.cfm?EventID=77623913&NoCaptcha>



The Rotary Club of Tamworth First Light
invite you to their

ANNUAL CHARITY GOLF DAY

Multiple prizes!

Tamworth Golf Course
11.11.2022
Shot gun start 11:05am

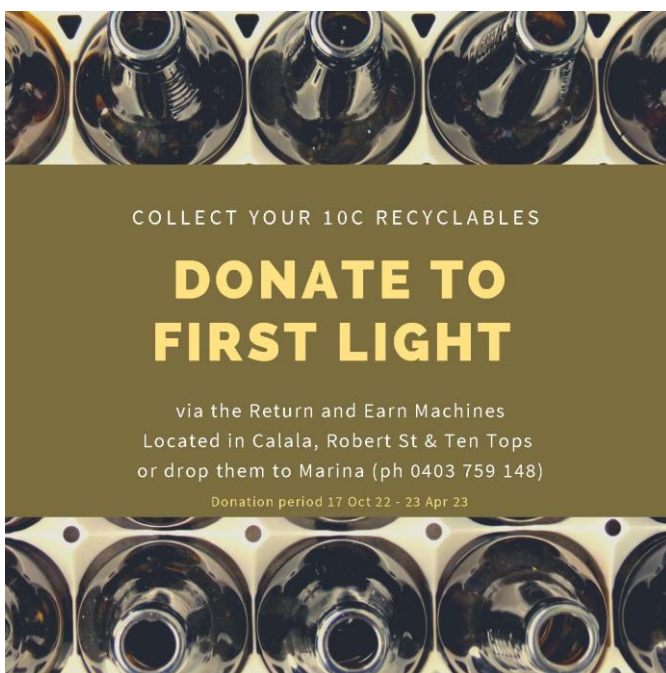


**\$40PP
LUNCH INCLUDED**

Bookings via Tamworth Golf Pro Shop 6765 9980
*golf link number must be supplied

Enquiries: Vicki Cooper 0412 802 215

All funds raised go The Rotary Club of Tamworth First Light to be distributed to local charities



COLLECT YOUR 10C RECYCLABLES

DONATE TO FIRST LIGHT

via the Return and Earn Machines
Located in Calala, Robert St & Ten Tops
or drop them to Marina (ph 0403 759 148)

Donation period 17 Oct 22 - 23 Apr 23

Rotary Events Calendar	Date
Zone 8 Conference - Canberra	28 - 30 Oct 2022
District Showcase & AGM – Tamworth	26 – 27 Nov 2022
District Conference – Tamworth	24 – 26 Mar 2023
Rotary International Convention – Melbourne	27 – 31 May 2023 (register now)

Social Calendar	Date
<ul style="list-style-type: none"> • Post Office Raffles Social Night • Lunch Social Walk 	<ul style="list-style-type: none"> • 3rd Friday of the Month • Mondays 12.30pm, Bi Park Gates
<ul style="list-style-type: none"> • Annual Golf Charity Day • First Light Art Gala • Polio Movie Night • Christmas Party 	<ul style="list-style-type: none"> • 11th November • 19th November • 1st December • 10th December

Tamworth First Light Website - <https://www.tamworthfirstlight.org.au/>

Our Club Facebook - <https://www.facebook.com/tamworthfirstlightrotary>

Member Portal Link: <https://www.dacdb.com/> (This one lets you find phone numbers for other members!!!)

Board Members	
President - Richard Hardwick	Secretary - Vicki Cooper
Treasurer - Dennis Maunder	Executive Secretary - Brodie Shields
Club Admin - Liz Gill	Membership - Louise Mathews
Public Relations - Peter Bell	Community Service - Steve Martin
Youth - Dimity Betts	Rotary Foundation - Steve Hawkins

The Object of Rotary

The Object of Rotary is to encourage and foster the ideal of service as a basis of worthy enterprise and, in particular, to encourage and foster:

- **FIRST.** The development of acquaintance as an opportunity for service.
- **SECOND.** High ethical standards in business and professions; the recognition of the worthiness of all useful occupations; and the dignifying of each Rotarian's occupation as an opportunity to serve society.
- **THIRD.** The application of the ideal of service in each Rotarian's personal, business, and community life.
- **FOURTH.** The advancement of international understanding, goodwill, and peace through a world fellowship of business and professional persons united in the ideal of service.

Tamworth - First Light

Meets each Wednesday

6:30 for 7:00 am

West League Club

Chillingworth Room

Phillip Street

South Tamworth

Club Officers and contact details

[President — Richard Hardwick](#)

[Secretary — Vicki Cooper](#)

[Treasurer – Dennis Maunder](#)

Other Clubs meet:

Monday PM – Tamworth West

Tuesday PM – Tamworth

Wednesday PM - Calala

Friday AM - Sunrise

Seven Areas of Focus



Rotary Grace

O Lord and giver of all good
We thank Thee for our daily food
May Rotary Friends and Rotary ways
Help us to serve Thee all our days

The Four-Way Test

of the things we think, say or do

1. Is it the TRUTH?
2. Is it FAIR to all concerned?
3. Will it build GOODWILL and BETTER FRIENDSHIPS?
4. Will it be BENEFICIAL to all concerned?

	2 nd November 2022	9 th November	16 th November
Topic	Federal Member for New England	Tamworth Aboriginal Medical Services (TAMS)	Clontarf Foundation
Location	Wests	Wests	Wests
Guest speaker	Barnaby Joyce MP	Damion Brown	Dan Lewinski
Sergeant	Malcolm Turnbull	Malcolm Turnbull	Malcolm Turnbull
Corporals (fortnightly)	Graham Dooley Terry Robinson	Izaak Ewin Steve Hawkins	Izaak Ewin Steve Hawkins
Meeter & Greeter	Deb Barnes	Hugh Raadgever	Bev Fletcher
Door Team	Peter Leonard Mitch Soree	Liz Gill Richard Walker	Glenn McIntosh Brian Logan
President Assist	Ian Howle	Helen Tickle	Val Hellmann
Visitor Assist	Courtney Priestley	Luke Massey	Nina Wrathall
Welcome	Luke Massey	Brodie Shields	Sue O'Connor
Bulletin Notes & Introduction	Steve Martin	Terry Robinson	Deb Barnes
Vote of Thanks	Laurence Heame	Michael Smith	Barry Biffin
POST OFFICE RAFFLE – FRIDAYS - 6:00 – 7:00PM			
4th November	11th November	18th November	25th November
Peter Bell Barry Biffin	Barry Biffin Mitch Soree	Mitch Soree Louise Matthews	Louise Matthews Izaak Ewin
BIRTHDAYS, ANNIVERSARIES, AND INDUCTIONS			
Members Birthdays	John Rouvray - 2 nd Nov, Peter Johnston – 5 th Nov & Dimity Betts - 8 th Nov		
Partners Birthdays	Nil		
Anniversaries	Nil		
Club Induction	Nil		
Attendance	??%		
Make-Ups	Nil		
Visiting Rotarians	Nil		
Visitors	Nil		
Heads & Tails	Brodie Shields		
Raffle	Skinner		

Now you have read the roster, make sure you read the rest of the bulletin!!